

VSH Super compression fittings
always the right solution

VSH Super



VSH INTEGRATED PIPING SYSTEMS

VSH is the number one specialist for integrated piping systems. We provide our customers with high quality, innovative integrated piping systems for gases and liquids together with their respective fittings. Our systems are used in residential and commercial construction, industry, fire safety and shipbuilding. VSH Integrated Piping Systems are known for their high, consistent quality combined with quick and simple installation and maintenance. All VSH systems are digitally prepared (BIM ready, CAD and data exchange) and technical specifications are easy to set. Furthermore, our systems are supported by VSH Engineering Services, which assembles the best integrated piping system for every possible application.

VSH is a strong international player that focuses exclusively on Integrated Piping Systems. VSH offers the widest range of reliable systems in the business: compression, groove, press and push systems in thick- or thin-walled metal or plastic. The product range can be combined with exactly the right fitting technology to ensure that you receive the best possible system for your application.

VSH was founded more than 85 years ago, making it unparalleled in terms of experience and expertise. We belong to leading international technology group Aalberts Industries, forming a key part of the Building Installations division. This gives us a healthy, solid financial basis that our customers can rely and build on. In a long term vision, this gives us the ability to stay ahead when it comes to innovation and development and have the best integrated piping systems available for now and in the future. Our primary focus is on installation technology and we are guided by the requests and requirements stipulated by the market, where we receive plenty of input from, thanks to our valuable relationships with our customers and partners.

VSH has its own international knowledge and development centre, state of the art production facilities and efficient distribution centres. We also have a fully customer-oriented sales and service organisation with proven experts always available to assist you. This ensures you will receive professional advice from the very start of your project, as well as customised integrated solutions, seamless availability and reliable support both during and after delivery.

VSH assures a safe and above all successful future - find out more about VSH now. Visit www.vsh.eu or call +31 (0)35-6884 330 for a personal appointment.



André in het Veld,

**Executive Director Building Installations
Aalberts Industries**

VSH Integrated Piping Systems: The right solution, always and everywhere

VSH Integrated Piping Systems consist of product ranges for connection and valve technology. Together they will provide the ultimate solution for top quality integrated systems used in residential and non-residential construction, industry, fire protection and shipbuilding. **Working together with VSH offers you many benefits.**

THE PLUS OF VSH INTEGRATED PIPING SYSTEMS:

- + Innovative concepts
- + Installation support
- + Customer Service
- + Exclusive training courses
- + Online information and selection tools
- + VSH Engineering Service



Top quality

Easy installation, safety and top quality are our main focus at VSH. We produce complete product ranges using top-rank production processes to fulfill the most stringent requirements. All our products have the major national and international quality approvals.



Working with VSH

In everything we do, we aim for an optimal match within your daily production process. VSH distinguishes herself by making her partnership with you very valuable. This is what you can expect from us:

You don't want to come up short? Our products are always available no matter where you are, thanks to our international distribution network.

Do you want to make the right choice? We give you clear and complete product information and handy online selection tools to help you find the best solution for your application.

Do you like top-notch support? When it comes to technical advanced projects you can appeal to VSH Engineering Services. This expert service assembles the best integrated system for every application. Our experienced Customer Service staff can answer all your questions and gives you a reliable advice. You can be assured of having access to the specific knowledge and excellent support, no matter where or when you need it.

Will you lead the way? We offer a broad range of training courses so you can always practice our latest solutions correctly.



VSH Super

The most extensive package of compression fittings



THE PLUS OF VSH Super:

The right solution, always available

- + A wide range of fittings for every application (metal and plastic tubes)
- + Normal brass and DZR fittings from 6 to 54 mm
- + Available in plain, nickel-plated and chrome-plated
- + A wide range of accessories with compression connections
- + Designed for optimum installation thanks to the large dimensionally stable cross flats on the union nuts and bodies
- + Simple installation with standard tools
- + Quick connection technology allowing reassembly
- + Smooth installation (no juddering or creaking) with additional tube guidance
- + Peace of mind: maximum quality and security
- + A wide range of approvals
- + BIM ready



VSH Super is a complete range of fittings suitable for a wide variety of applications, ranging from potable water, gas, heating and solar to compressed air systems. The VSH Super range consists of compression fittings for connection to copper and steel tubes. VSH Super also has compression fittings that are suitable for connecting plastic tubes. **Easy installation and high quality are the top priorities.**

A large assortment of fittings for every application

VSH is known for its VSH Super compression fittings in the market since 1975. The fittings are available in different grades of brass in the dimensions from 6 to 54 mm and suitable not only for heating installations, but also for gas, solar and potable water systems. In addition to the standard compression fitting which is suitable for copper or thin-walled steel tubes, VSH Super also offers specific solutions, including:

- **Multi Super:** for plastic or multi-layer tubes
- **Super Blue:** specifically for connecting thick-walled steel pipes
- **VSH Super gas for Belgium:** this range of fittings complies with the regulation for gas installations in Belgium

A wide variety of valves with compression connections completes the VSH Super range. These include solutions such as water ball valves, gas ball valves and balancing valves.

Designed for optimum installation convenience

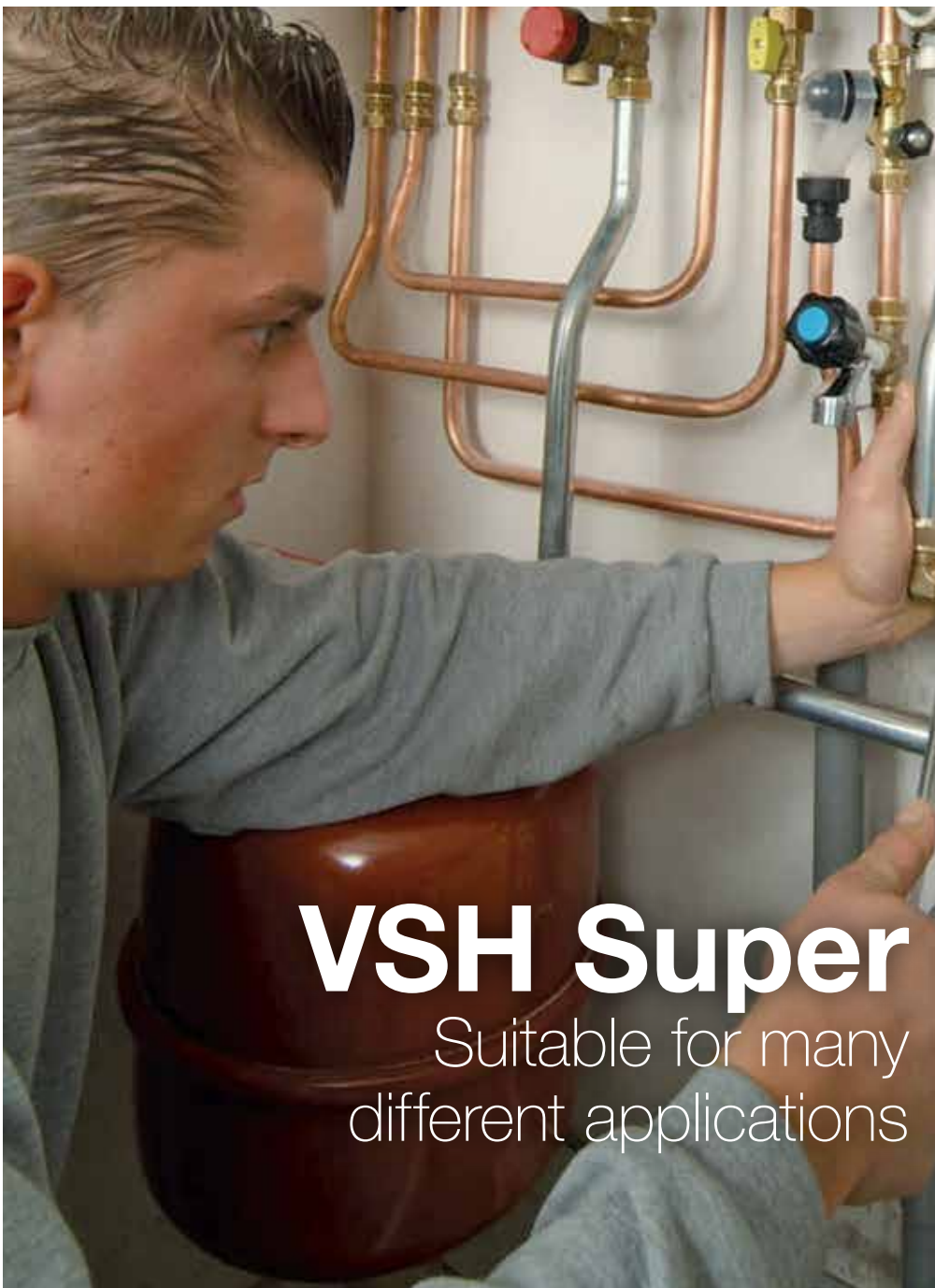
VSH Super compression fittings are designed based on the requirements of the installers and therefore perfectly suitable for optimum installation. For example, because of the dimensionally stable across flats, ensuring that the spanner always remains in place during tightening. The special compression ring ensures a tight seal at all times. This will result in large savings in terms of labour costs as there is no need for the installer to return for retightening. Besides that, the high-quality finish of the fittings ensures a smooth assembly at all times, with no juddering or creaking.

Quality

All VSH Super fittings are produced in our modern, automated factory in Hilversum (The Netherlands). Our main focus is to deliver absolute top quality, so we maintain a strict quality control during the production process. VSH Super has an extensive 10-year product warranty.



VSH Super delivers a high-quality solution for connecting various tube materials, and many different possible applications. VSH Super is available in brass and DZR for use in almost every imaginable system, **from heating and potable water to gas and solar.**



VSH Super
Suitable for many different applications



Heating

VSH Super is the perfect solution for connecting central heating boilers and heating installations. The fittings can be used directly in every possible situation without the need for special tools. It is no coincidence that almost every central heating boiler in The Netherlands is connected with VSH Super fittings.

Potable water

With VSH Super you can be confident of compliance with applicable standards for potable water systems. Thanks to the use of a special brass alloy, a large part of the VSH Super range is KIWA-ATA-, DVGW-certified and can therefore be used in potable water installations without any restrictions.

Gas

The VSH Super product range includes specific high-quality products for a wide variety of gas systems. From gas systems in The Netherlands, for which the fitting must be Gastec-certified to special fittings for gas applications in Belgium. VSH Super will always provide the right solution.

Solar

VSH Super fittings have a very high temperature resistance and are therefore suitable for use in solar installations.

Detailed information on applications can be found in the VSH Super technical manual or at www.vsh.eu



VSH Super

Excellent in residential,
commercial and industrial
buildings

Choosing for VSH Super means selecting a top-class piping system with a 40-year track record in a wide variety of situations. The system is ideal for residential, commercial and industrial buildings, and can readily be used in new building projects, offering an unprecedented range of solutions for all your renovation projects.



Existing and new buildings

VSH Super can distinguish itself from other solutions particularly in the building sector, where quality and reliability are of great importance. Whether in residential building projects in which a large number of central heating boilers needs to be installed quickly, or a situation with only one central heating boiler; with VSH Super the job is done in no time at all.

One thing is for sure: if you want to extend an existing system, VSH Super is the product you can rely on. VSH Super offers a wide range of fittings to solve your problems, whether it is a one-part adapter piece, reservoir coupling or a fitting that can easily make a perfect transition to the other VSH piping systems (such as VSH XPress or VSH SudoPress).

VSH Super

The VSH Super brass and DZR compression fittings are particularly suitable for use in heating, gas and potable water systems, but can also be used in other applications, including:

- Industrial water installations
- Firehose reel connections
- Treated water installations
- Compressed air systems
- Vacuum lines

VSH Multi Super

VSH Multi Super fittings are particularly suitable for use in heating installations and can be used with more than 30 types of plastic and multi-layer tubes of different makes. VSH Multi Super is also used in other applications, including:

- Potable water installations
- Industrial water installations
- Firehose reel connections
- Treated water installations
- Compressed air systems

VSH Super Blue

VSH Super Blue is mainly used for connecting existing heating installations to new piping systems. VSH Super Blue therefore offers many benefits particularly in your renovation projects.





VSH Super

Always the right solution



Want to know more?

For a complete and up-to-date overview of all VSH Super fittings, visit

www.vsh.eu

You can look for specific products with the search function, or you can use smart filters and conveniently compare found products. All relevant product data and specifications are available in detail level. If you're interested in a particular product, simply put it on your wish list.

As you can see, you can rely on VSH products and systems for top quality and the best solution for every situation. Our 85 years of experience is your assurance of expertise, up-to-date knowledge and reliable advice. This makes VSH the perfect partner, dovetailing your wishes with those of your clients.

Would you like to make an appointment to meet an account manager in your region? Or receive phone advice and support from our experts?

VSH Customer Service:

+31 (0)35 68 84 330

Available Monday to Friday, 8am to 5pm.

info@vsh.nl



VSH Super

VSH offers the best solutions for Integrated Piping Systems. Integrated Piping Systems consist of various product ranges for connection technology and valve technology that together create the ultimate solution for top quality integrated systems.

Connection technology

The connection technology section contains a range of intelligent products using a variety of connection technologies in both metal and plastic. These products are designed to meet all of your connection requirements.

VSH XPress

Piping systems with M-profile press fittings in four types of material: carbon steel, copper, stainless steel and cunifer. Suitable for heating, cooling, water, gas, solar, compressed air and fire protection systems in residential and commercial buildings, shipbuilding and industry.

VSH SudoPress

Piping systems with V-profile press fittings in copper, galvanised steel and stainless steel, suitable for heating, water, gas and solar systems.

VSH PowerPress

A piping system with DW-profile press fittings specially designed for thick-walled steel pipes; suitable for heating, cooling, compressed air and sprinkler systems.

VSH Shurjoint

A piping system with grooved connectors suitable for heating, cooling, compressed air, sprinkler and potable water systems.

VSH Super

Compression fittings for potable water, gas, heating and solar systems. Suitable for steel, copper, stainless and plastic tubes.

VSH Tectite

Push fittings in copper, brass and stainless steel, suitable for potable water, heating and compressed air systems.

Valve technology

The connection technology product lines can seamlessly be combined with our valve technology products in order to create a single integrated system with consistently high quality. In this technology area, we offer various product ranges to enable you to find a suitable solution for every valve-related challenge imaginable.

VSH Fittings B.V.

Oude Amersfoortseweg 99
1212 AA Hilversum, The Netherlands
P.O. Box 498
1200 AL Hilversum, The Netherlands
Phone +31 (0)35 68 84 330
info@vsh.nl
www.vsh.eu